

I hope you are ready for another adventure. If you haven't done a mystery quilt before, you're in for a treat. If you participated in our last mystery adventure, you already know how sweet the treat is!

Here's how the mystery quilt works. The fabric requirements and cutting instructions are given the first week. Construction steps are posted in the following weeks—just enough to keep you guessing! On the last week, we will give you the final construction steps and reveal the mystery.

Dig through your stash for scraps or yardage with light, medium and dark values as instructed in Fabric Requirements, 5" squares or larger. Remember that mystery quilt patterns emerge best when high contrast fabric choices in color and/or value are made. Gather the total yardages listed.

Now get ready to have some fun!

## Scrap Buster #5 WEEK 3

### WEEK 3 INSTRUCTIONS

**Note:** Use a 1/4"-wide seam allowance and stitch right sides together for all construction unless otherwise instructed. It is important to keep same units and pieces together. We suggest using sandwich bags. Be sure to label each bag with the unit or piece reference name.

- Stitch H to I along the diagonal; press seam toward I. Repeat to make 96 H-I half-square units.

- Stitch two H-I units together making 24 each right- and left-hand units referring to [Figure 1](#); press seams away from I.
- Stitch N to each H-I unit matching N to the I sides as shown in Figure 3; make 24 each H-I-N right- and left-hand units; press seams toward N.

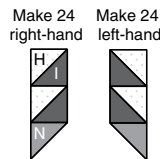


Figure 3

- Sew L to the H side of each left-hand H-I-N unit making 24 H-I-N-L units (Figure 4); press seams toward L.



Figure 4

- Repeat steps above using H, J, N and M pieces to make 24 each H-J-N right-hand units and H-J-N-M units.