

Kumbayah Wall Quilt

SPECIFICATIONS

Skill Level:

Intermediate

Quilt Size: 33" x 33"

Block Size: 9" x 9"

Number of Blocks: 1





Make this wall quilt to match the bed-size quilt in the August 2009 issue of *Quilter's World* magazine.

INSTRUCTIONS

Completing the Block

Step 1. Mark a diagonal line from corner to corner on the wrong side of each B square.
Step 2. Place a B square right sides together with a C square; stitch $\frac{1}{4}$ " on each side of the marked line as shown in Figure 1.

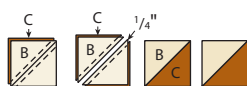


Figure 1

Step 3. Cut apart on the marked line, open units and press seams toward C to complete two B-C units, again referring to Figure 1.
Step 4. Repeat Steps 2 and 3 to complete eight B-C units. Set aside one of each color unit for another project.
Step 5. To complete the Friendship Star block, sew a B-C unit to opposite sides of A to complete the center row as shown in Figure 2; press seams away from A.



Figure 2

Step 6. Sew D to opposite sides of a B-C unit to make the top row as shown in Figure 3; press seams toward D. Repeat to make the bottom row.



Figure 3

Step 7. Sew the top and bottom rows to the center row to complete the block referring to the block drawing; press seams away from the center row.

Completing the Quilt

Step 1. Sew an E triangle to each side of the Friendship Star block; press seams toward E.

Step 2. Sew F to the top and bottom of the E/block unit; press seams toward F.

Step 3. Join the G strips on short ends to make one long strip; press seams open. Subcut strip into two $27\frac{1}{2}$ " G strips.

Step 4. Sew the G strips to opposite sides of the pieced unit; press seams toward G.

Step 5. Join nine D squares to make a side strip; press seams in one direction.

Repeat to make two side strips. Join 11 D squares to make the top strip; press seams in one direction. Repeat to make the bottom strip.

Step 6. Sew the D side strips to opposite sides and the remaining strips to the top and bottom of the pieced center; press seams toward F and G strips.

Step 7. Trace appliqué shapes onto the paper side of the fusible web as directed on patterns; cut out shapes,

leaving a margin around each one.

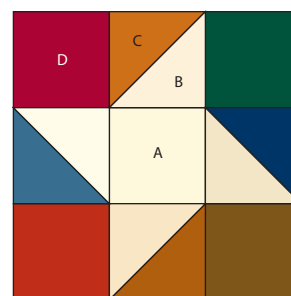
Step 8. Fuse shapes to the wrong side of fabrics as directed; cut out shapes on traced lines. Remove paper backing.

Step 9. Arrange appliqué pants and shirts on the G and F border strips, and heads on E triangles, referring to the Placement Diagram for positioning of motifs.

Step 10. Machine buttonhole-stitch around shapes using dark variegated thread to complete the pieced top.

Finishing the Wall Quilt

Step 1. Sandwich batting between the completed top and prepared backing piece; pin or baste layers together to hold flat.



Friendship Star
9" x 9" Block
Make 1

FABRIC	# STRIPS & PIECES	CUT	# PIECES	SUBCUT
Measurements based on 42" usable fabric width.				
4 fat quarters cream tonals	1	$3\frac{1}{2}$ " x $3\frac{1}{2}$ " A		Cut in half on 1 diagonal to make 4 E triangles
	4	$3\frac{7}{8}$ " x $3\frac{7}{8}$ " B		
	2	$7\frac{1}{4}$ " x $7\frac{1}{4}$ "		
	2	$7\frac{5}{8}$ " x 13" F		
	3	$7\frac{5}{8}$ " x 21" G		
Scraps dark prints	44	$3\frac{1}{2}$ " x $3\frac{1}{2}$ " D squares		
	4	$3\frac{7}{8}$ " x $3\frac{7}{8}$ " C squares		
		Appliqué pieces as per patterns		
$\frac{3}{8}$ yard brown mottled	4	$2\frac{1}{4}$ " x 42" binding		
Backing		39" x 39"		

SUPPLIES

- Batting 39" x 39"
- Neutral-color and dark variegated all-purpose thread
- Quilting thread
- 1 yard fusible web
- Basic sewing tools and supplies

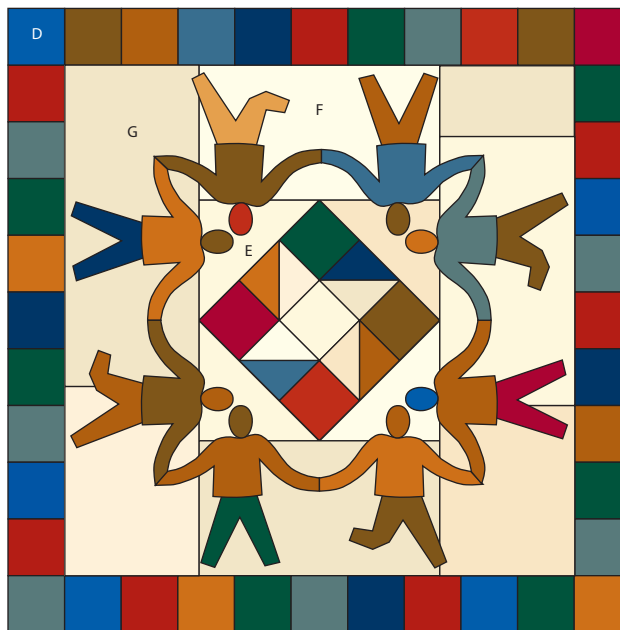
Step 2. Quilt as desired by hand or machine; remove pins or basting. Trim batting and backing even with the top. *Note: The sample has a heart design hand-quilted on each shirt. Refer to the shirt pattern for the quilting design.*

Step 3. Join the binding strips with right sides together on short ends to make one long strip; press seams open.

Step 4. Press the strip in half with wrong sides together along length.

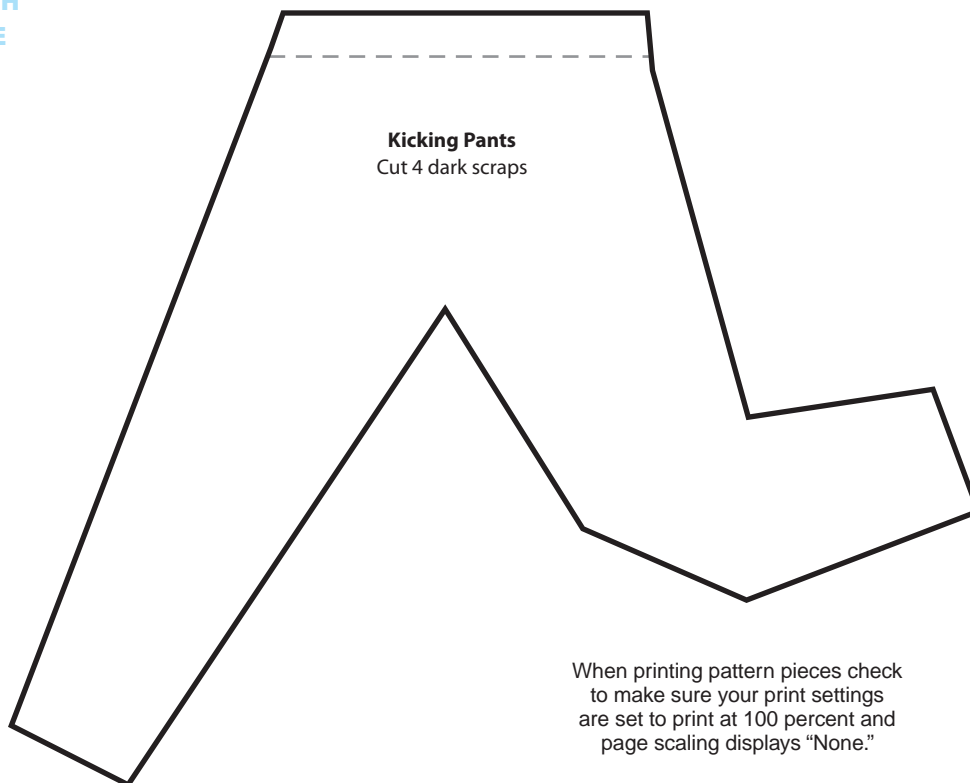
Step 5. Sew the binding to the quilt edges, mitering corners and overlapping ends.

Step 6. Fold binding to the back side and stitch in place to finish. **QW**



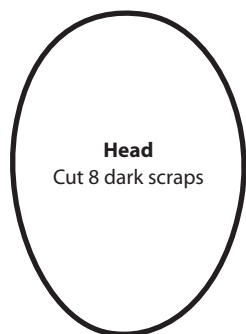
Kumbayah Wall Quilt
Placement Diagram 33" x 33"

KUMBAYAH TEMPLATE

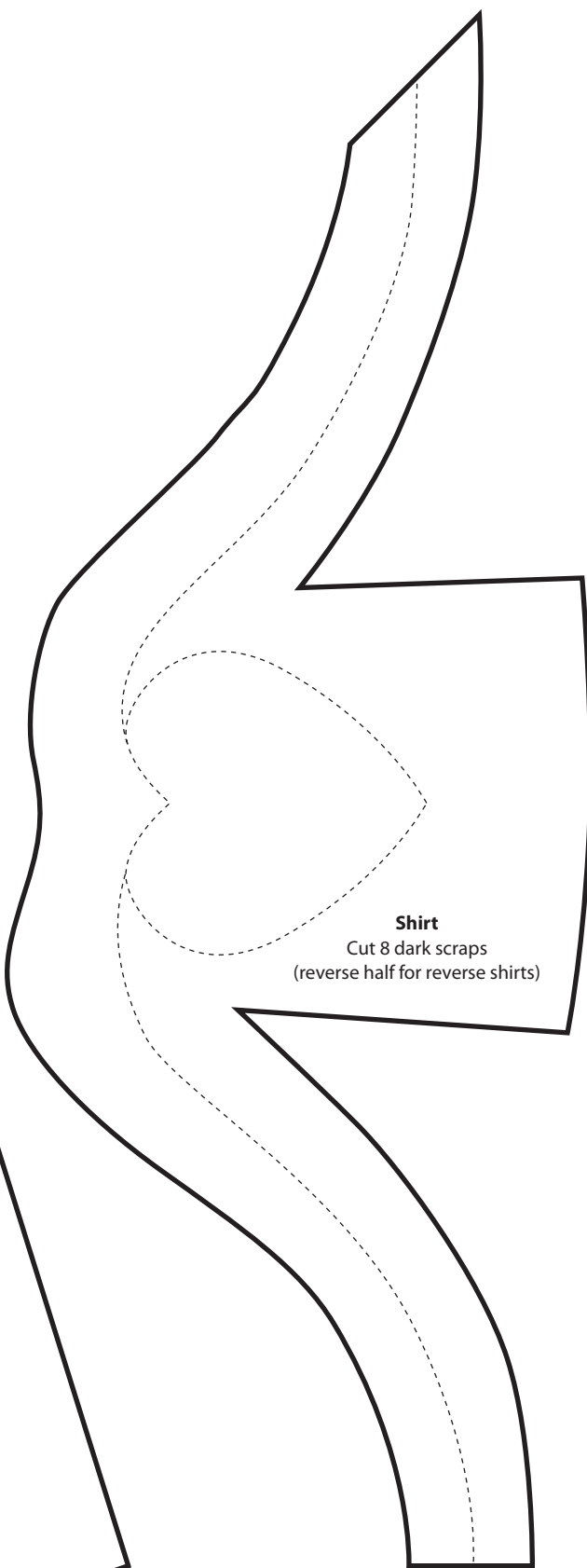
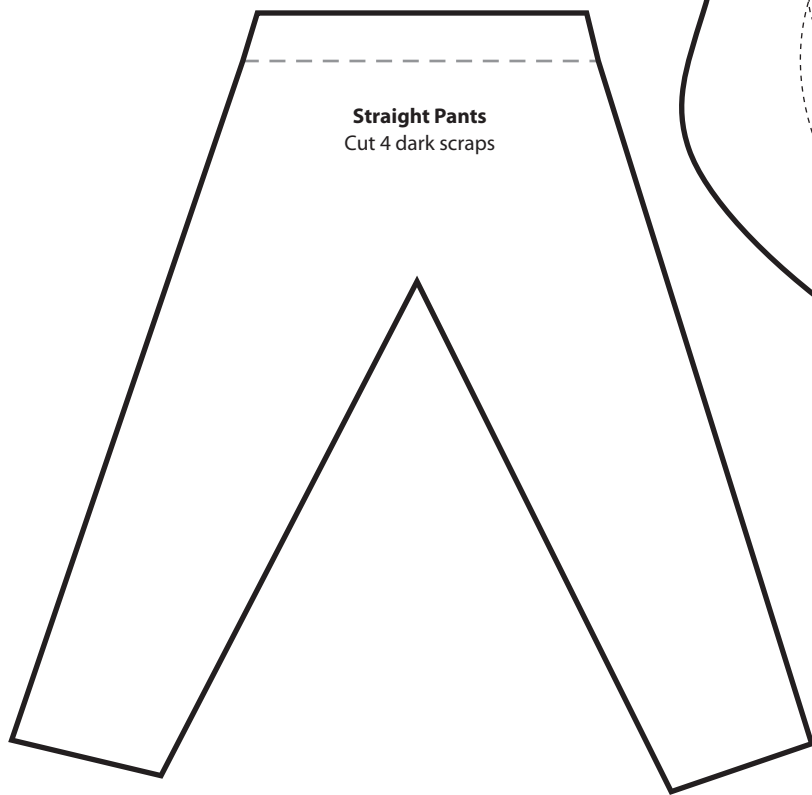


When printing pattern pieces check to make sure your print settings are set to print at 100 percent and page scaling displays "None."

**KUMBAYAH
TEMPLATES**



When printing pattern pieces check to make sure your print settings are set to print at 100 percent and page scaling displays "None."



The NEW
digital version
of *Quilter's World*
is now here!



★ Zoom in on
text and photos!

3 reasons to add a **digital**
subscription to *Quilter's World*:

- 1 Instant access to two years of back issues!**
You'll be able to easily search for patterns, articles and how-to techniques—everything is right there at your fingertips electronically!
- 2 Zoom in on just what you want!** Whether it's the current issue or a back issue, you can enlarge photos, text or diagrams to make things clearer and easier on your eyes.
- 3 Get a great value!** At only pennies a pattern, it's the smart way to build up your quilting library!



Get your **digital subscription**
to *Quilter's World* right now!

\$9.97 a year when added to a print subscription, \$14.97 per year for digital only

Digital.Quilters-World.com

When you sign up, you'll get your first issue
(and two-year archive access) immediately!